



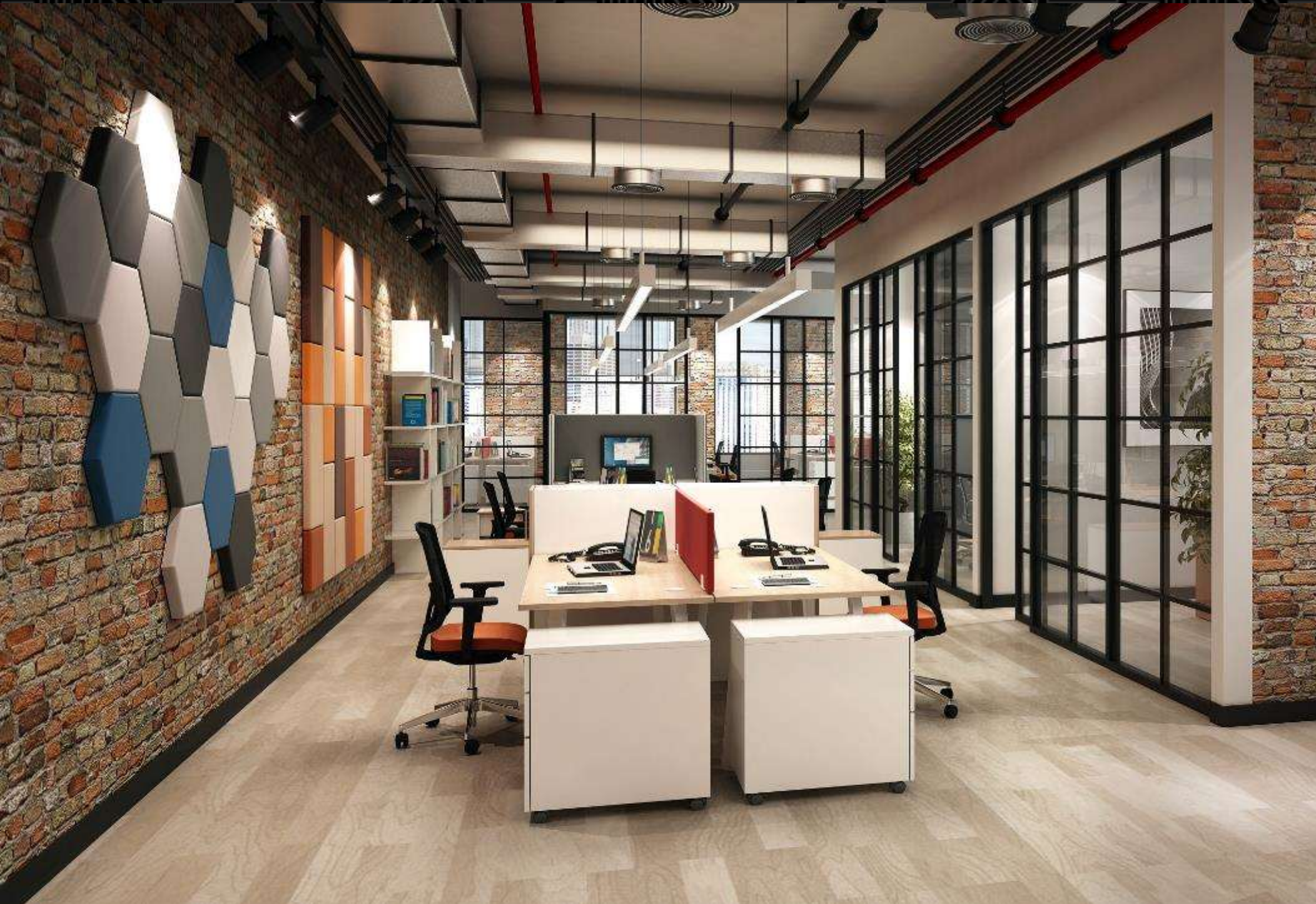
Company profile

2020 - 2021

Commercial Interior Design

Idwroks in Brief:

idworks



Who we are?

ID Works is a private enterprise run by passionate people who believe we can contribute positively to improving the working lives of people at the office.

We create the Workplaces of the Future...

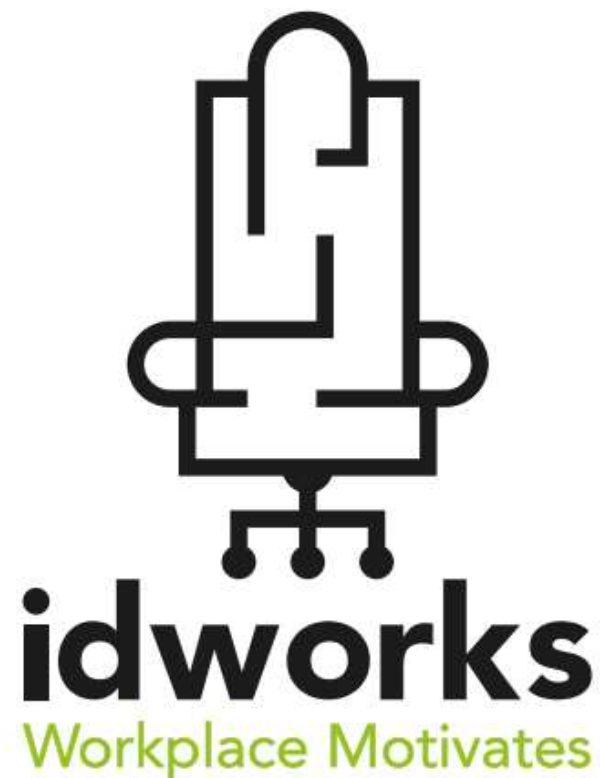
idworks is an international design & build practice focusing on maximizing organizational objectives & profits by creating efficient workplaces.

With branches across the Middle East and soon to expand into Asia idworks has grown to become the regions leading innovative workplace design practice with particular focus on workplace wellness & corporate office interiors.

- GCC's fastest growing fit-out contractor and furniture supplier
- Largest selection for office and Hospitality furniture systems – over 25 suppliers
- Leaders in the Design, Build and Office Furniture Industry

Mission Statement

idworks



Belief

We strongly believe that corporations' outperformance, is directly linked to how intelligently their workplace environment is designed and built as a motivator.

Mission

To integrate workplace wellness solutions that motivate
The Workforce leading corporations to outperform.

Value Proposition

Creating a motivating workplace wellness
by design, for corporations to outperform.



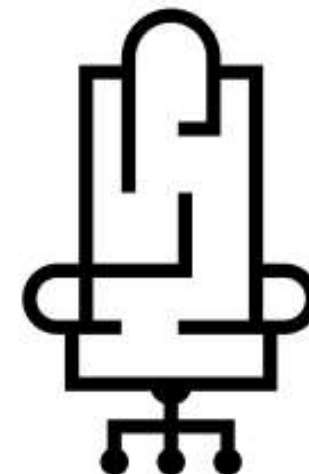
Employee



Luxury Chair



Office Plan



Final Logo

What we do...

idworks

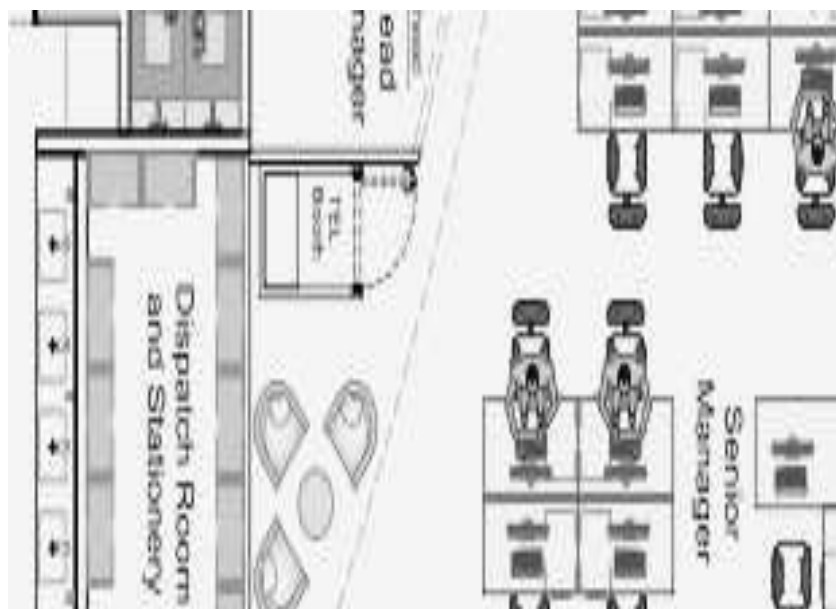
- Design Concept
- Design Development
- 3D Visuals
- Bidding
- Design Implementation

- Turnkey Interior Construction
- Design & Build Interior – Wall Panelling;
Build-in Carpentry & Joinery Works
- MEP Works
- HVAC System
- Lightings
- Professional Project Managements

- Furniture Supply and Installation

... furniture from all over the world; Germany, Italy, Spain, Finland, Poland, Turkey. Malaysia, Indonesia,

DESIGN



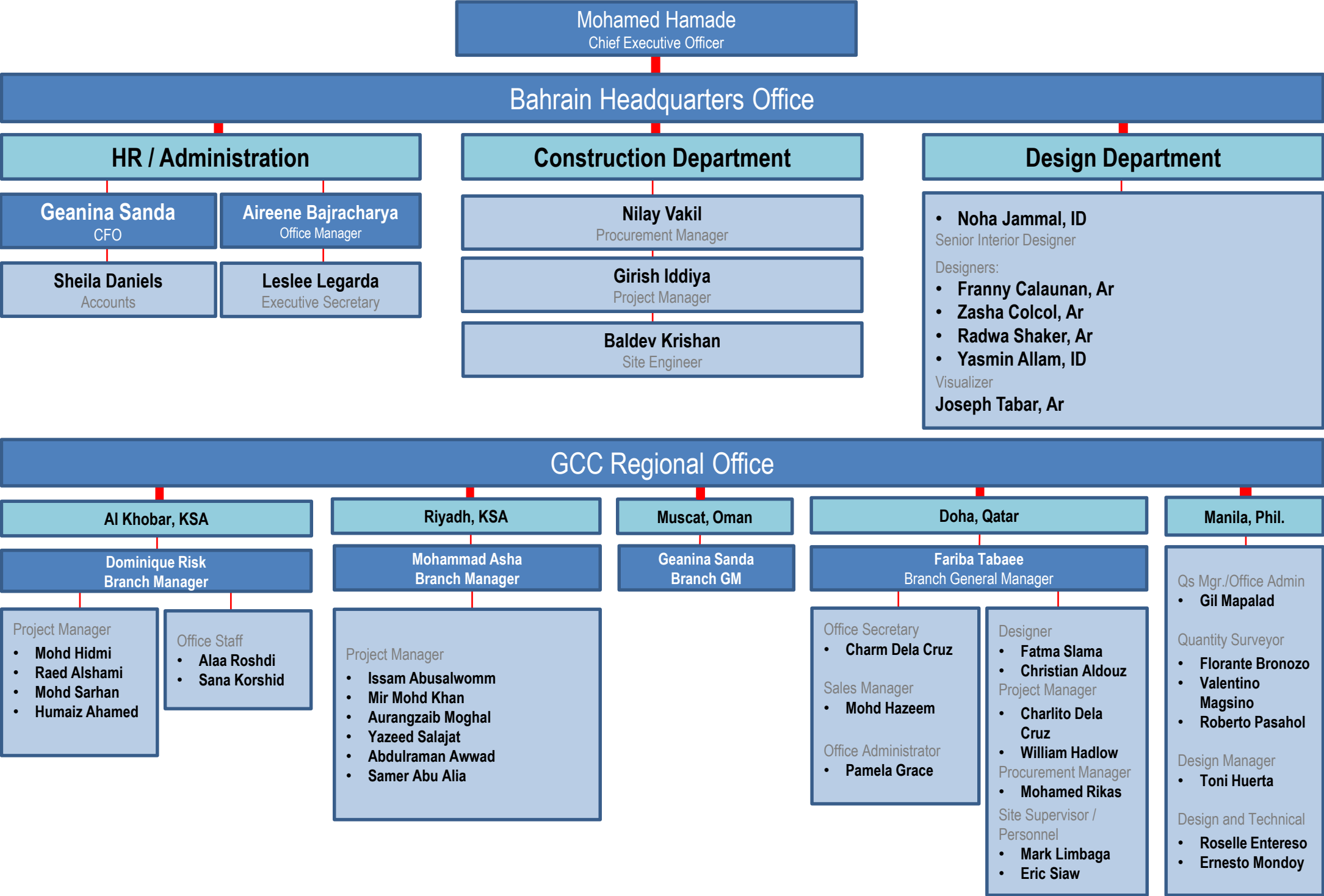
FIT-OUT SERVICE



FURNISHING SERVICES



Organizational Chart



Client's Logo

idworks



Integrated Office Design

ID WORKS 4 step solution-oriented modules for creating the optimum space plan

NEEDS ANALYSIS

1

MACRO LAYOUT

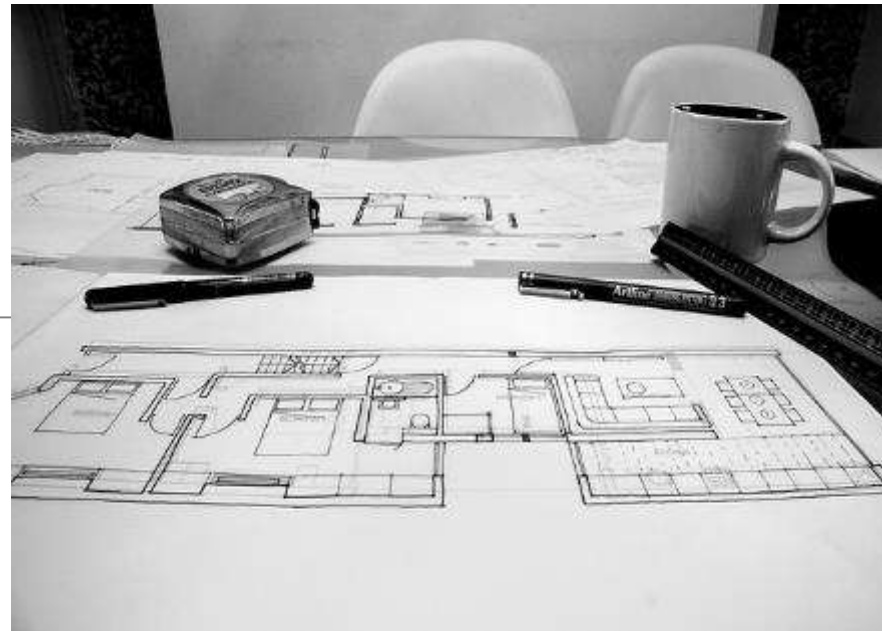
2

MICRO LAYOUT

3

FURNITURE & CW
PROPOSAL

4

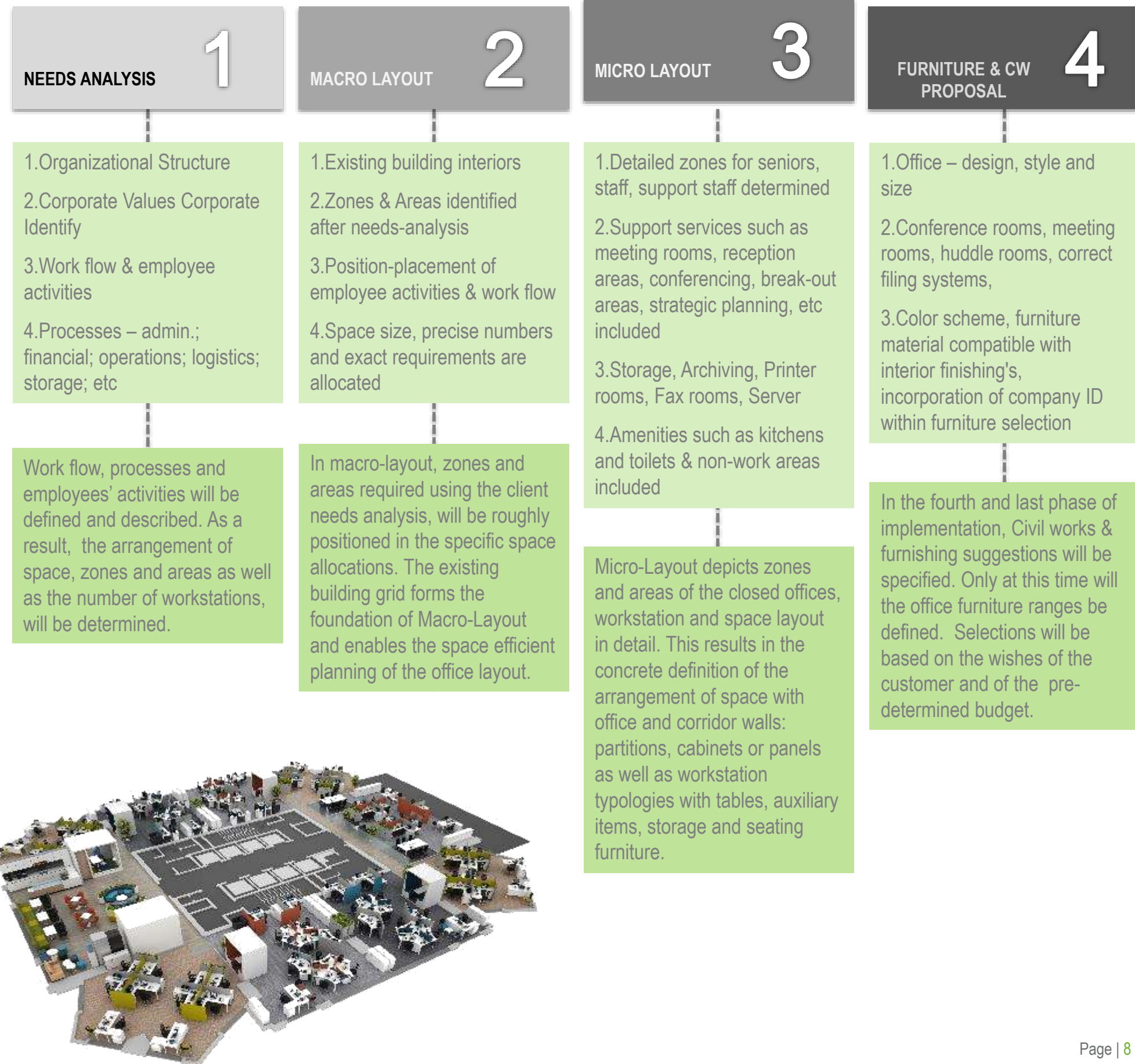


... Creating the optimum space plan

ID WORKS 4 step solution-oriented modules for creating the optimum space plan

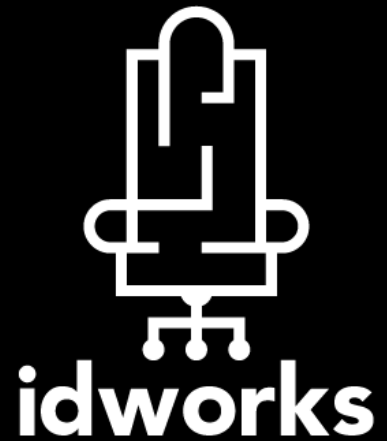
Answer we seek...

- How does your company work
- Do you visit clients
- Do clients visit you
- What is the flow of employees like
- How important is the reception area
- Do you prefer visitors to be close to the entrance
- Do you prefer:
 - a) open-plan concept
 - b) Closed offices
 - c) Mix of open-closed
- Amenities for employees
- Communication in-house
- Special requirements:
 - a) Storage
 - b) Server room
 - c) Archiving
- Future Expansion



Work Setting | Workplace of the Future?





Completed Projects

- *SAMA (Saudi Arabia Monetary Authority)*
- *The Red Sea*
- *MiSk*
- *NEOM*
- *Qiddiya*
- *CCC*
- *TAQA*
- *DHL*
- *Worley Parson*
- *BUPA*



SAMA (Saudi Arabia Monetary Authority)

idworks





SAMA (Saudi Arabia Monetary Authority)

idworks





SAMA (Saudi Arabia Monetary Authority)

idworks



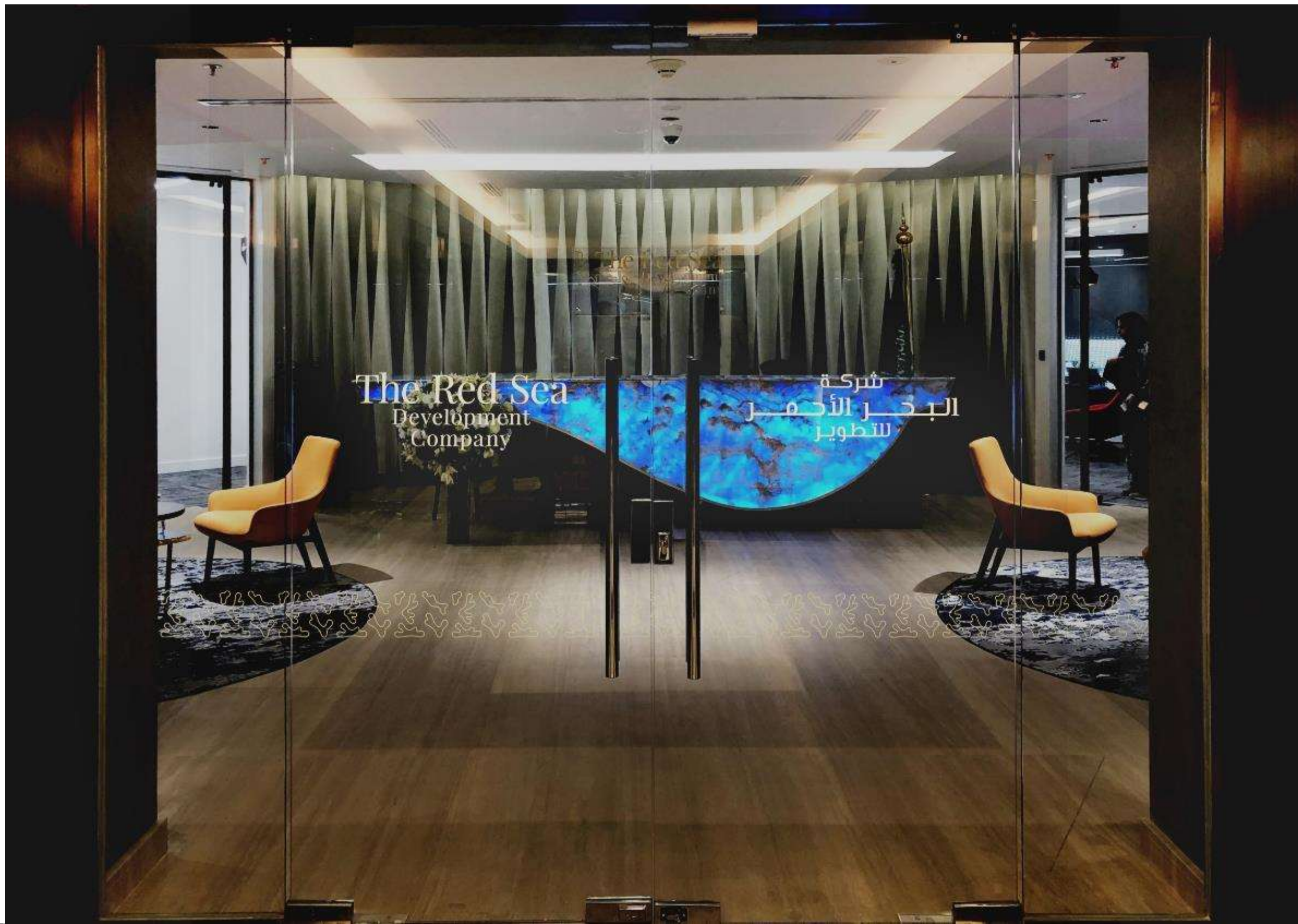


SAMA (Saudi Arabia Monetary Authority)

idworks



The Red Sea (ITCC, Saudi Arabia)











MiSk (Riyadh, Saudi Arabia)

idworks





MiSk (Riyadh, Saudi Arabia)

idworks





نيوم NEOM

NEOM (Riyadh, Saudi Arabia)

idworks





نيوم NEOM

NEOM (Riyadh, Saudi Arabia)

idworks

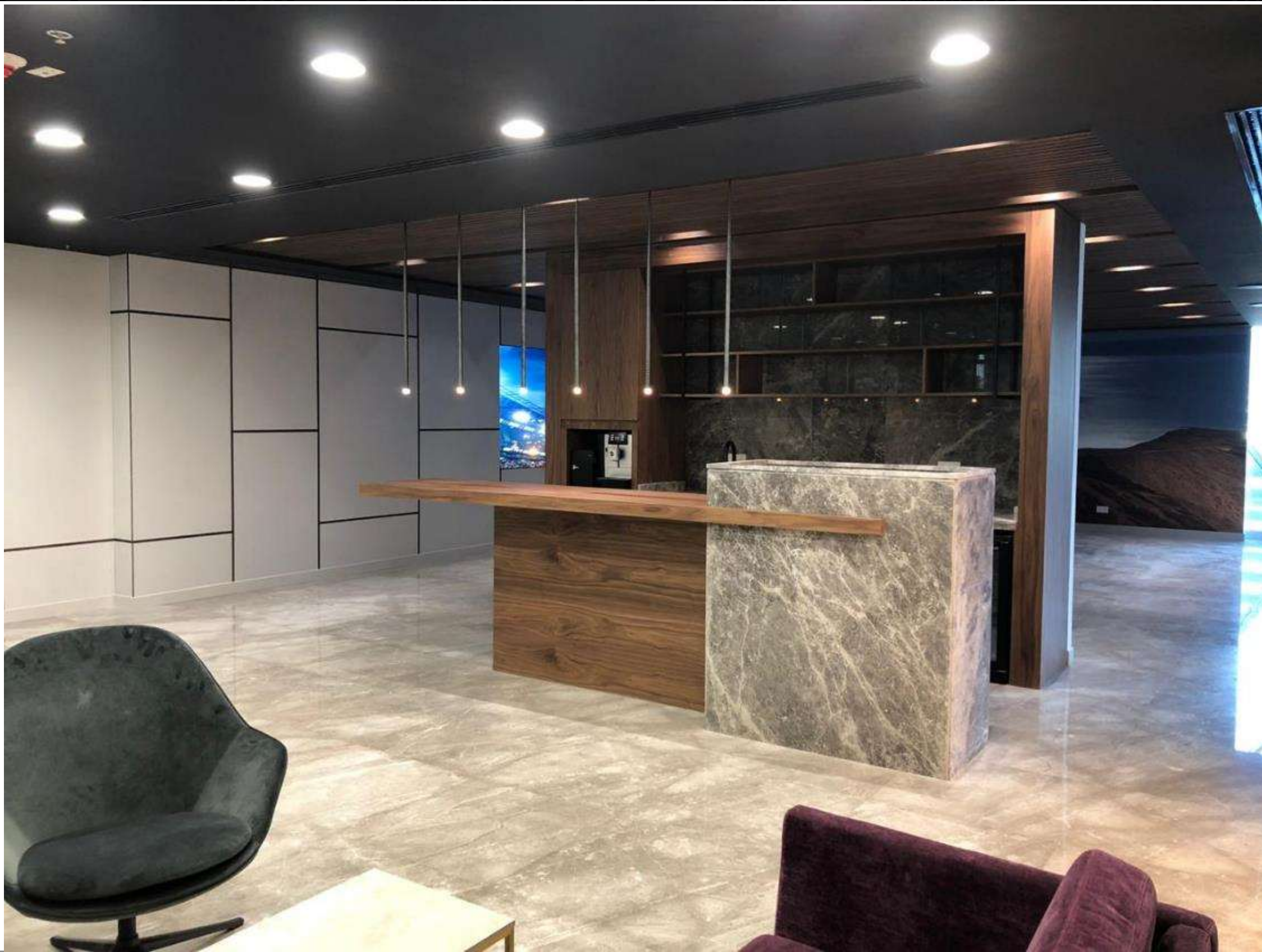




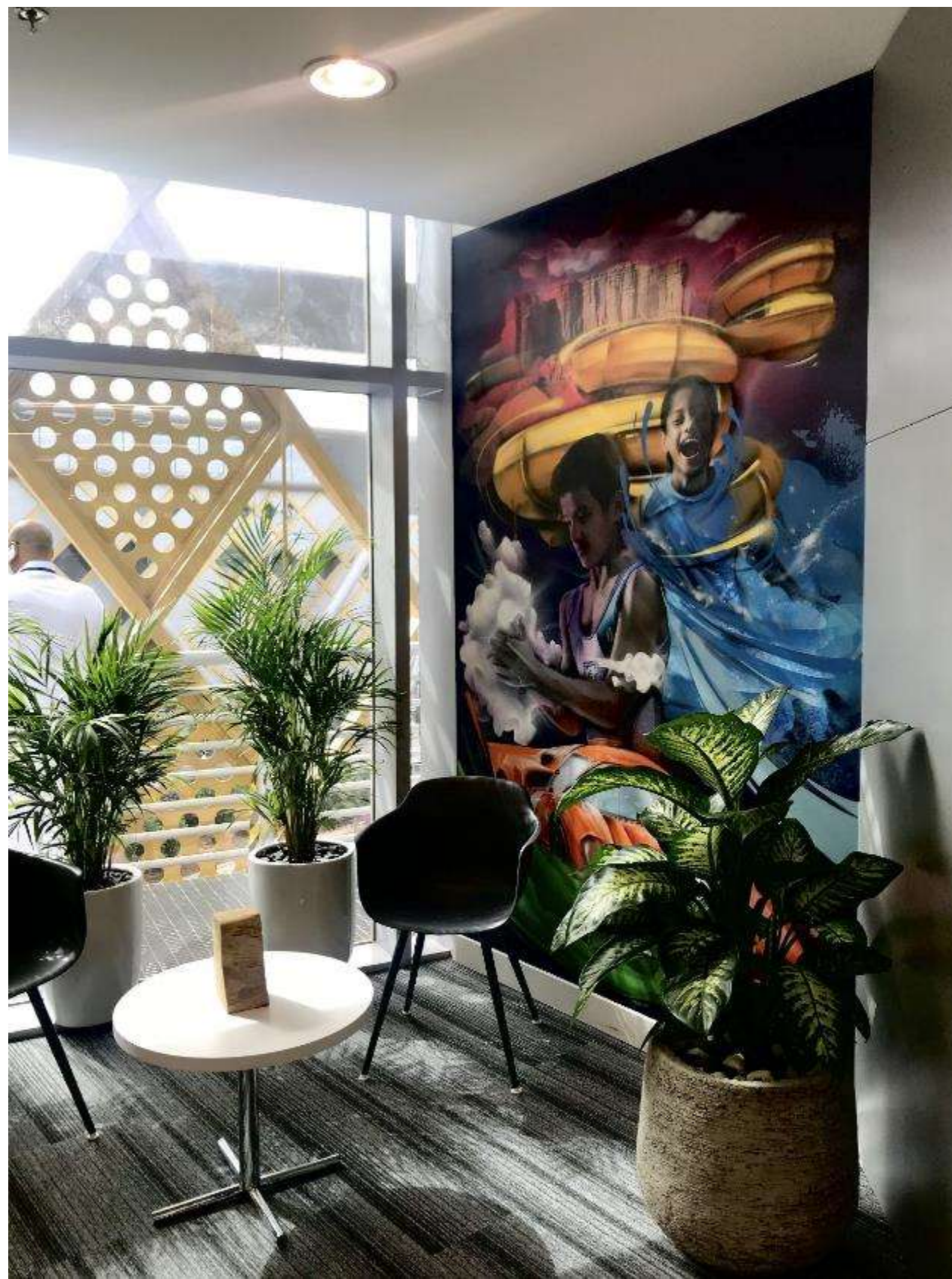
نيوم NEOM

NEOM (Riyadh, Saudi Arabia)

idworks









Contact Center Company (Riyadh, Saudi Arabia)

idworks





Contact Center Company (Riyadh, Saudi Arabia)

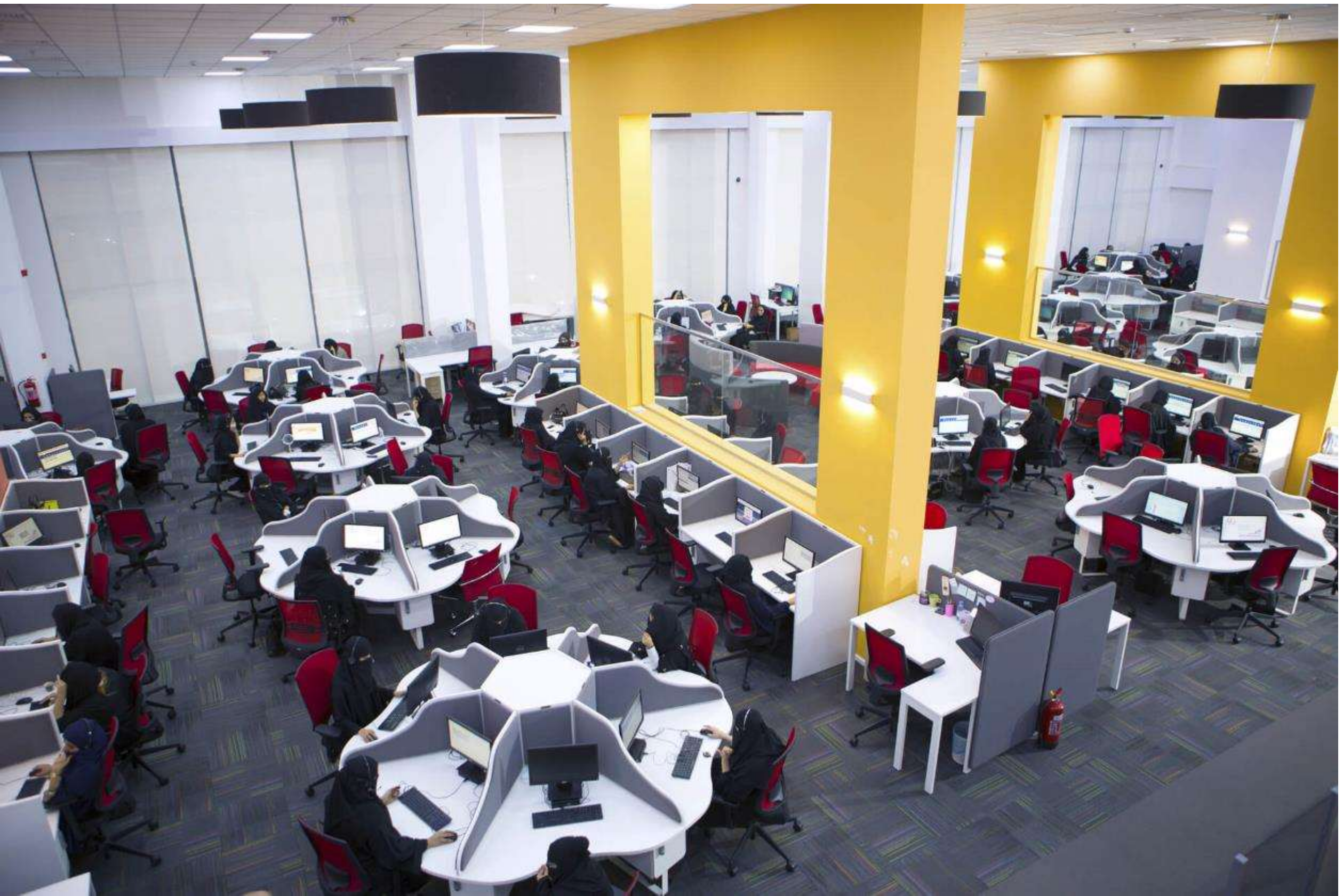
idworks





Contact Center Company (Riyadh, Saudi Arabia)

idworks

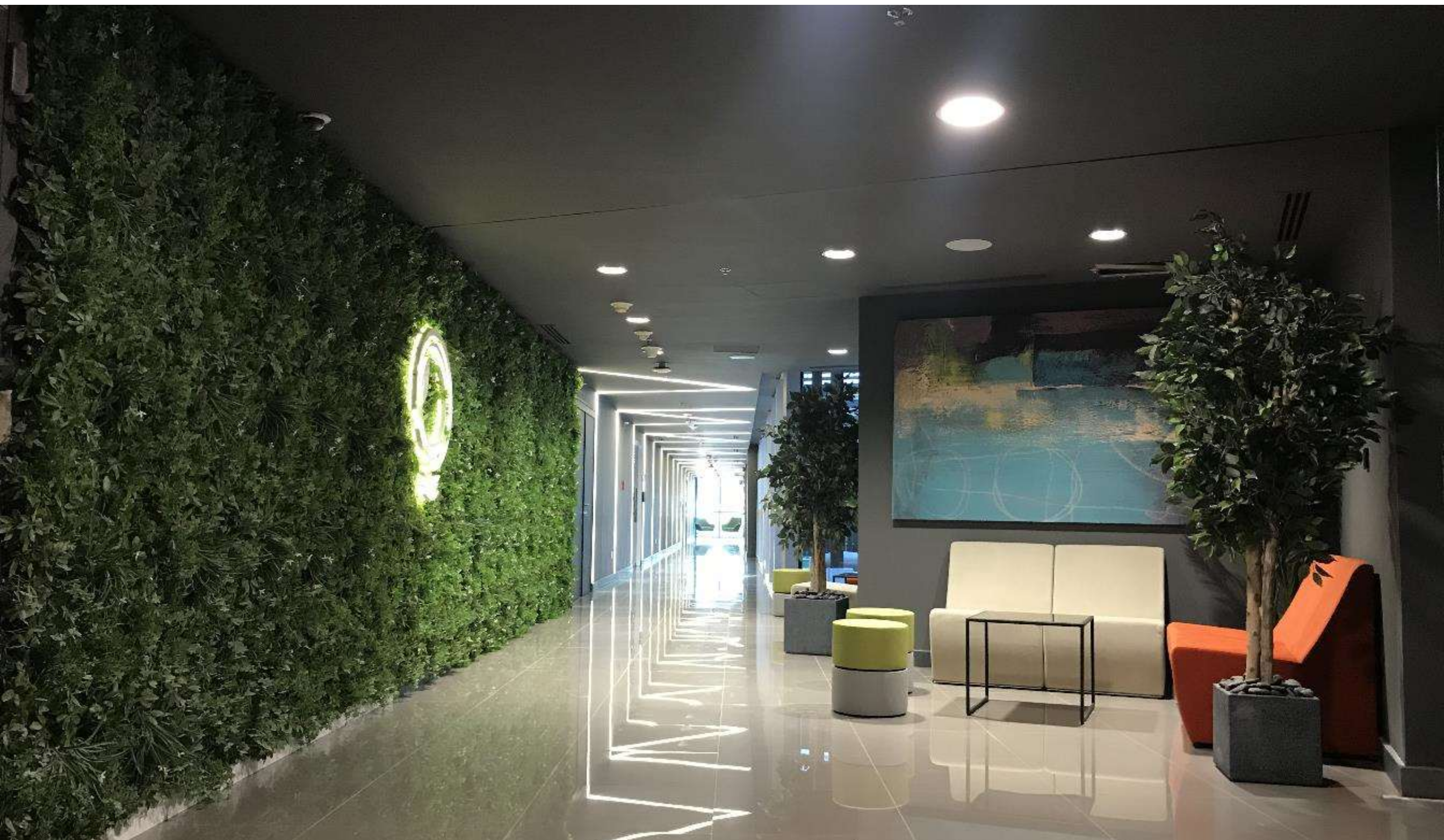




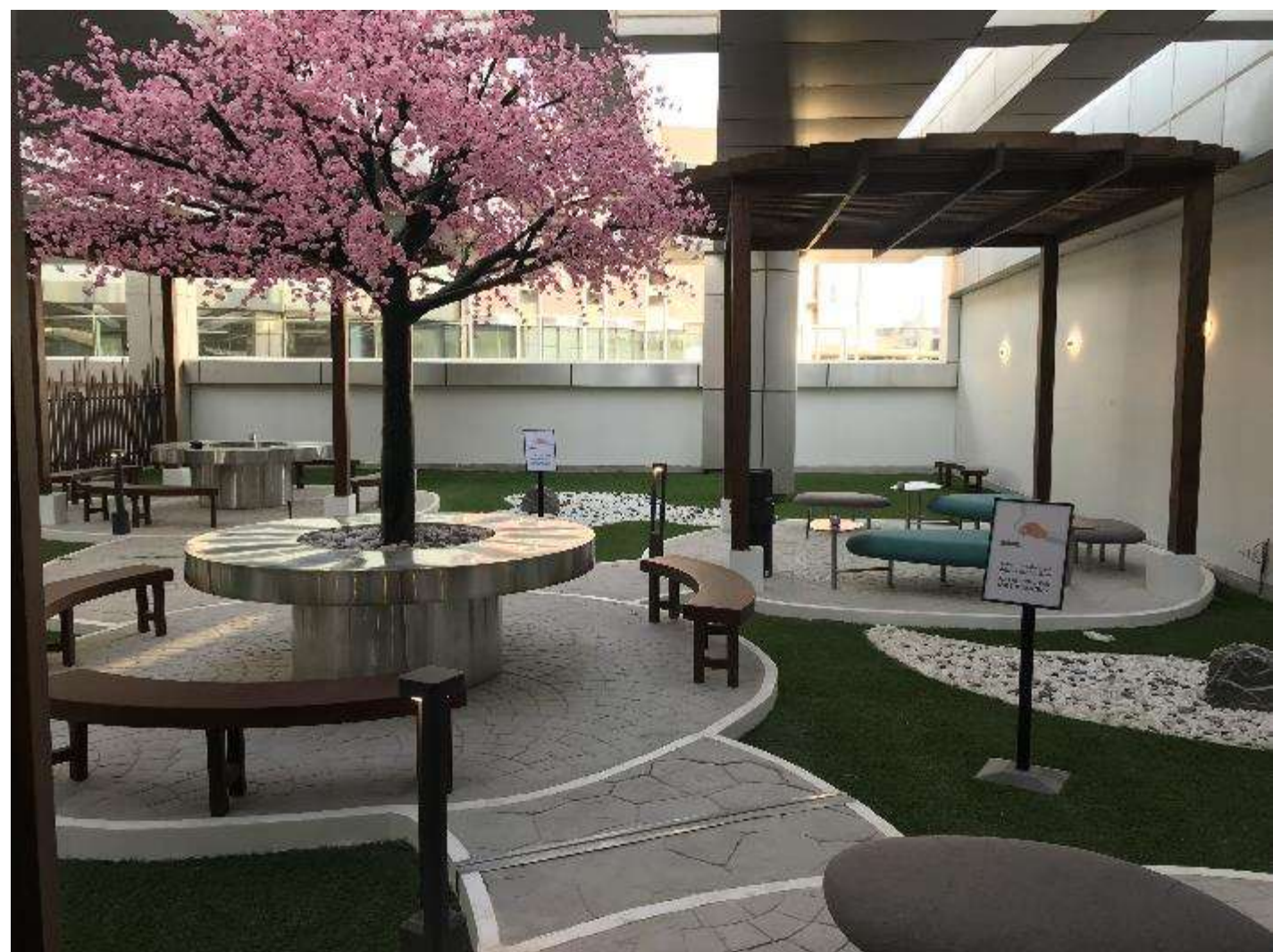
Contact Center Company (Riyadh, Saudi Arabia)

idworks











DHL (Al Khobar, Saudi Arabia)

idworks





DHL (Al Khobar, Saudi Arabia)

idworks





DHL (Al Khobar, Saudi Arabia)

idworks

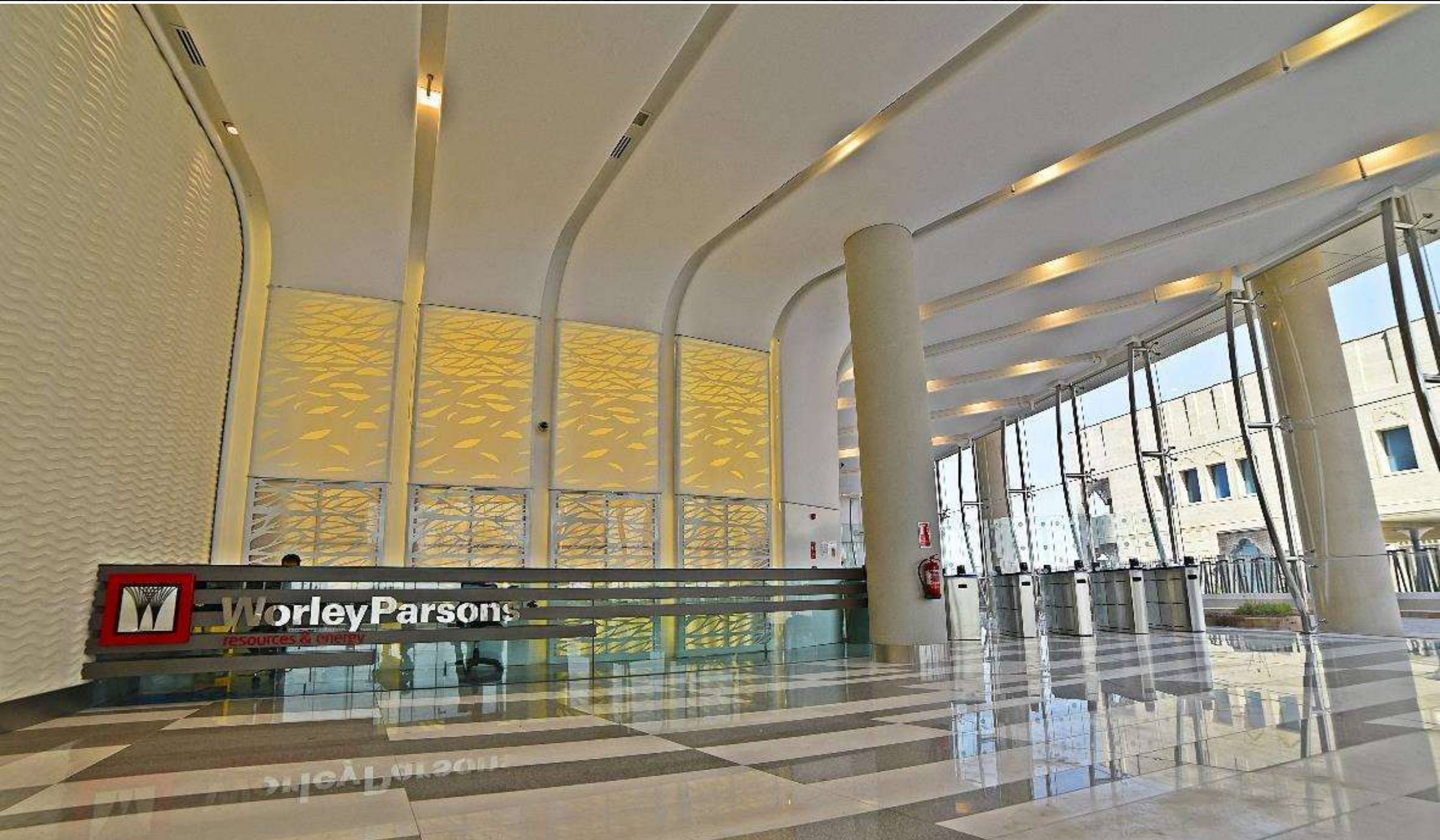




WorleyParsons
resources & energy

Al Khobar, Saudi Arabia

idworks





WorleyParsons
resources & energy

Al Khobar, Saudi Arabia

idworks





WorleyParsons
resources & energy

Al Khobar, Saudi Arabia

idworks





WorleyParsons
resources & energy

Al Khobar, Saudi Arabia

idworks





WorleyParsons
resources & energy

Al Khobar, Saudi Arabia

idworks



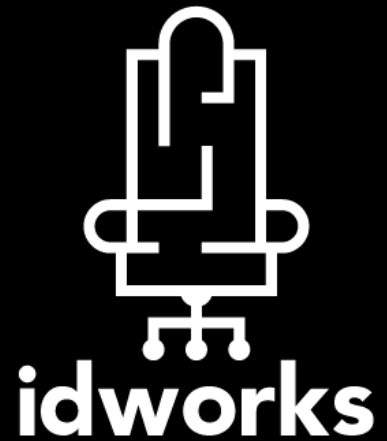












Smart Solutions Samples

- *Auditoriums / Multi-Functional Halls*
- *Collaboration Area*
- *The Hub*
- *Focus Booths*
- *Recreation Areas*

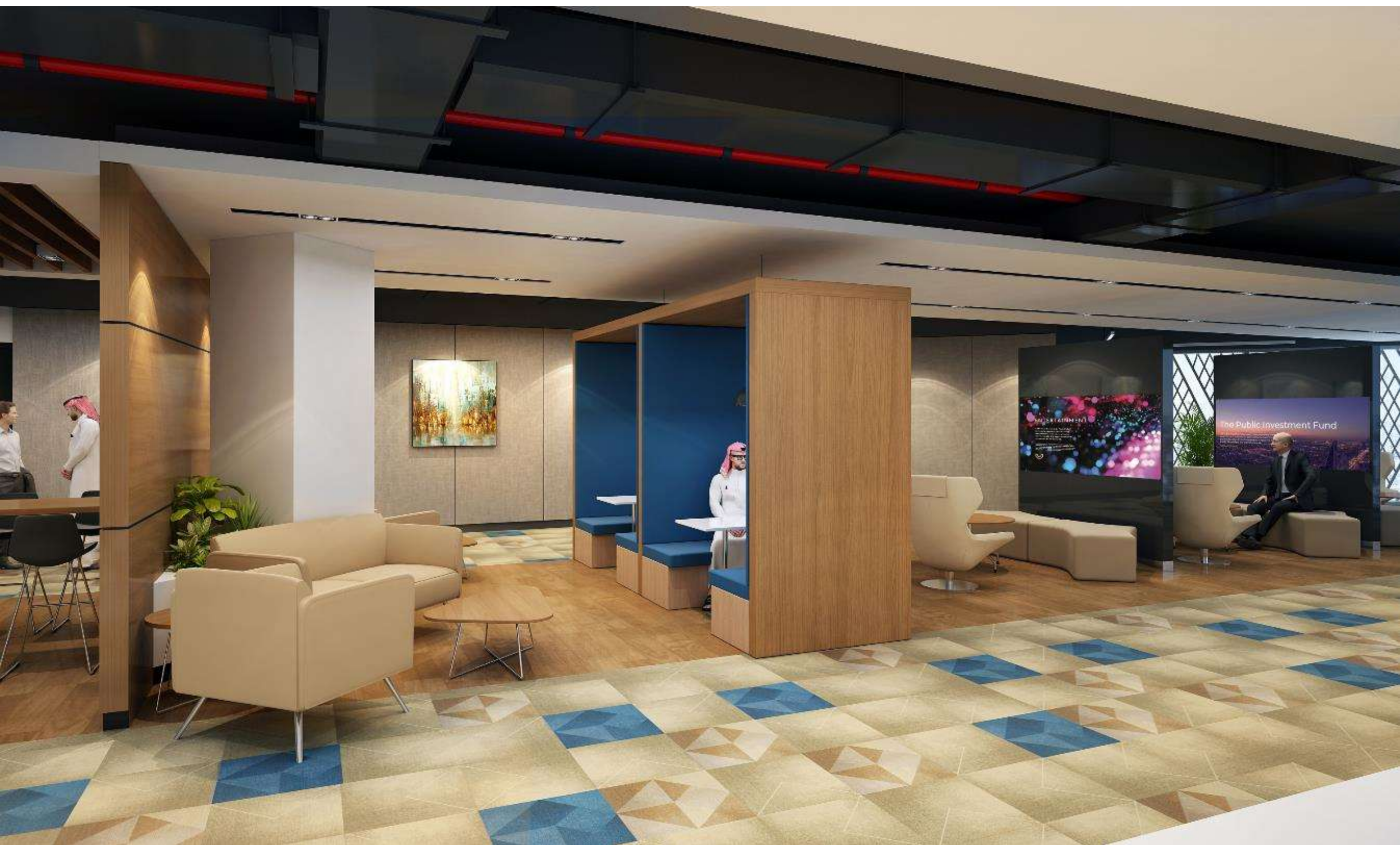
Auditoriums

idworks



Collaboration

idworks



Collaboration

idworks



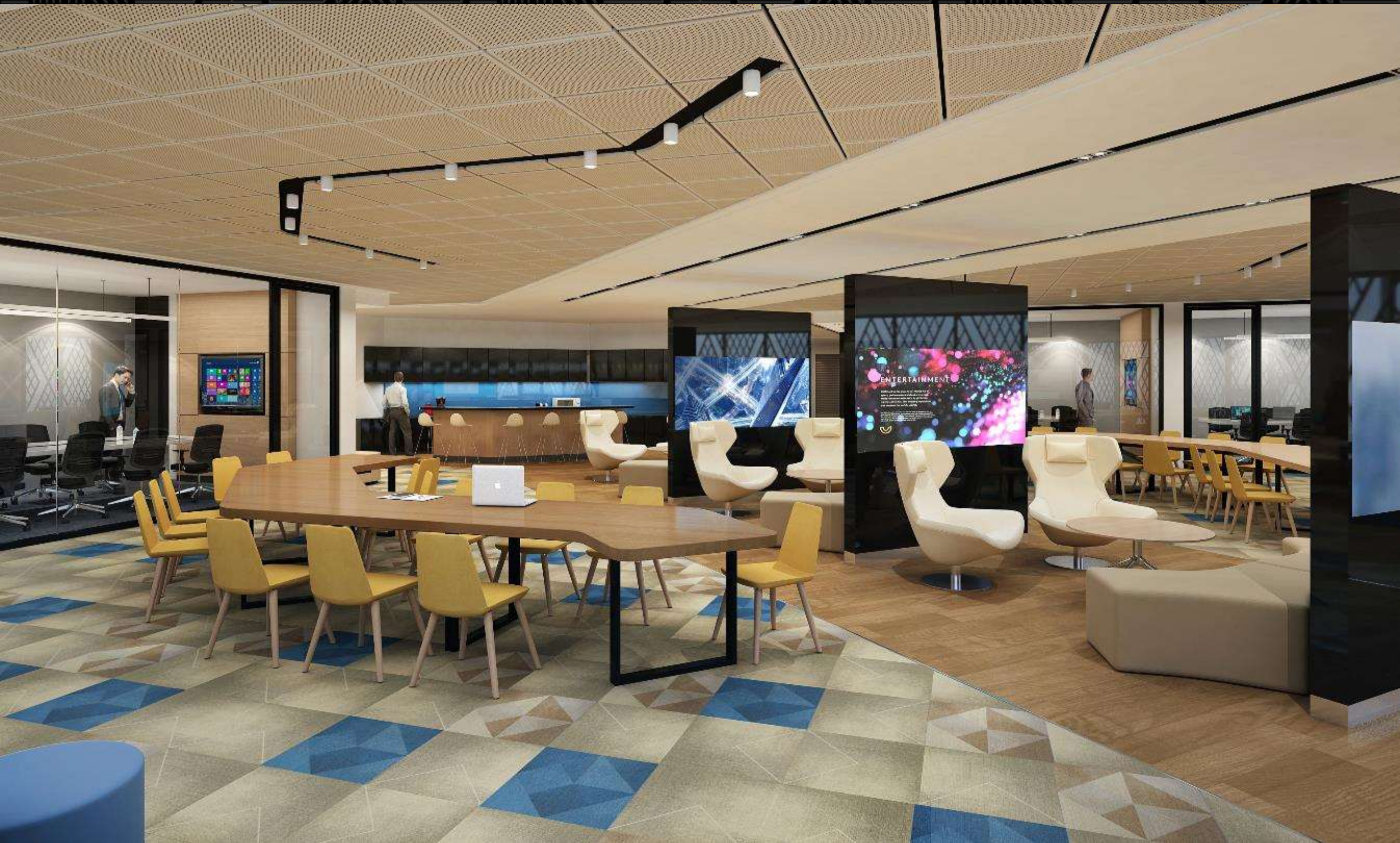
Collaboration

idworks



The Hub

idworks



The Hub

idworks



Focus Booths

idworks



Recreation

idworks





Comfortable Operational Chair



Adjustable Height Desks



Collaboration Stations



Telephone Booths



Individual Pods



Superior comfort chairs



Support Work Desk

New Furniture | **Min Dia Dimension: 1200 Diameter** **Max Dia Dimension: 1800 Diameter**

idworks



Call Center | Triangular: 1400x900; Rectangular: 1400x700

idworks



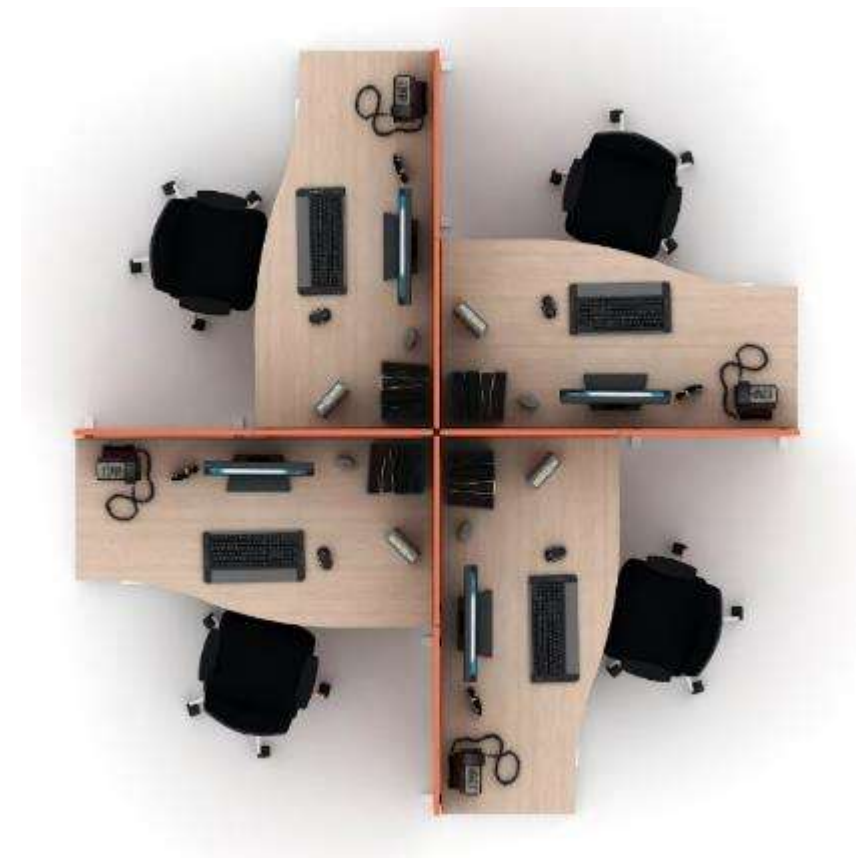
Operational Workstation | Min Dia Dimension: 1200 Diameter Max Dia Dimension: 1800 Diameter

idworks



Operational Workstation | Min Dia Dimension: 1200 Diameter Max Dia Dimension: 1800 Diameter

idworks



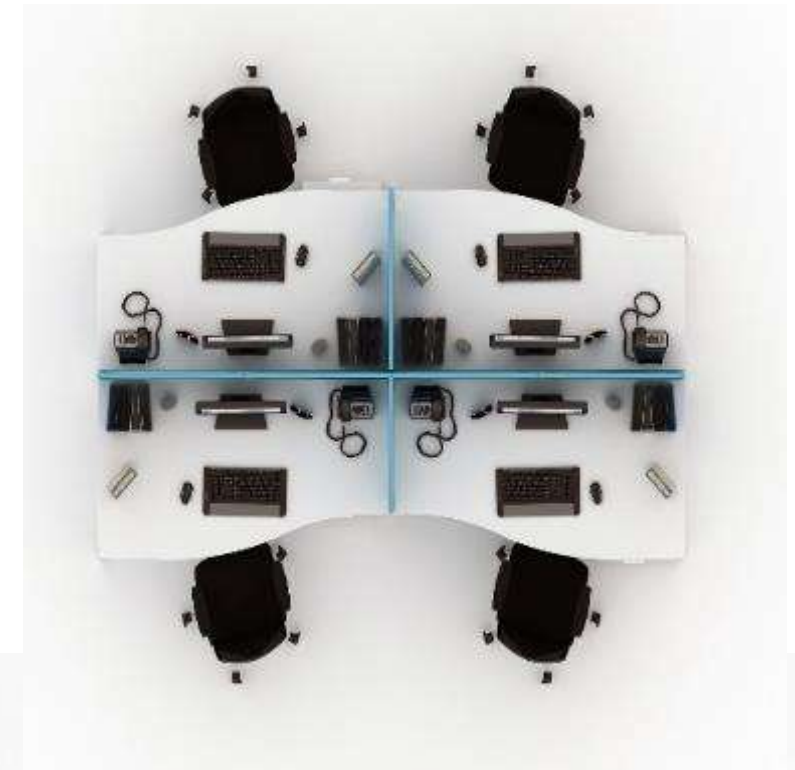
Operational Workstation | Triangular: 1400x900; Rectangular: 1400x700

idworks



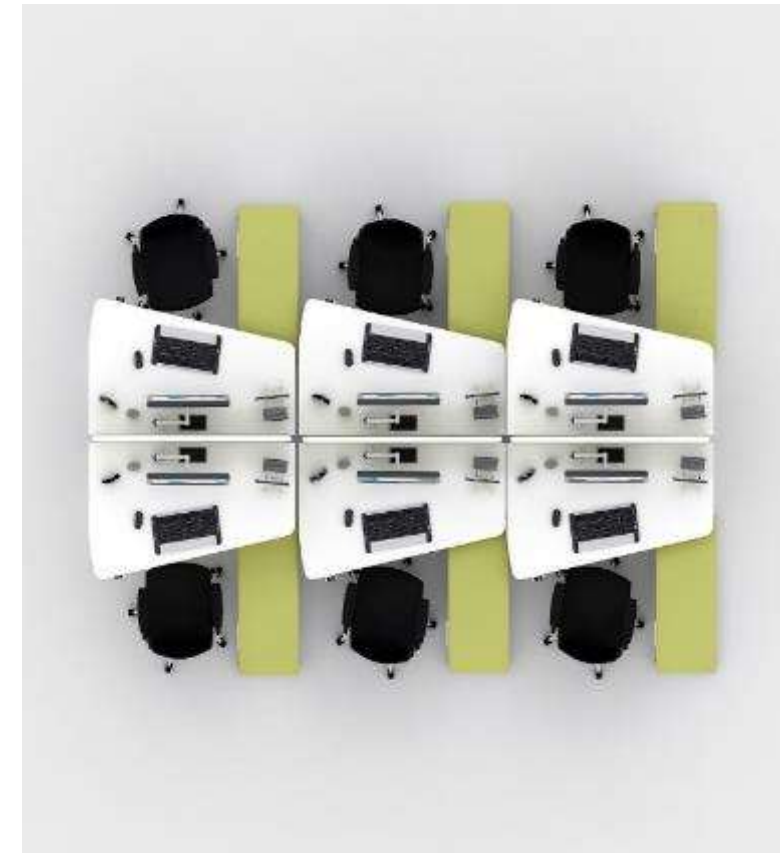
Operational Workstation | Min Dimension: 1600x700 Max Dimension: 1800x800

idworks



Operational Workstation | Min Dimension: 1600x700 Max Dimension: 1800x800

idworks



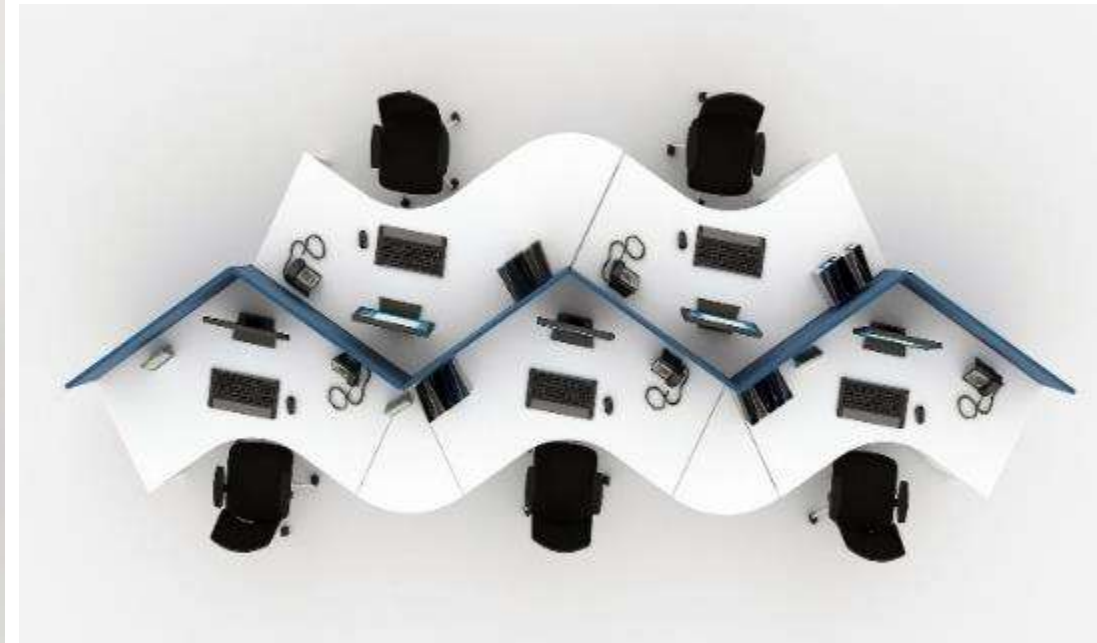
Operational Workstation | Min Dimension: 1600x700 Max Dimension: 1800x800

idworks



Operational Workstation | **Min Dimension: 1600x700** **Max Dimension: 1800x800**

idworks



Operational Workstation | **Min Dimension: 1600x700** **Max Dimension: 1800x800**

idworks



Executive Desk | Min Dimension: BenchType 1800x800
Max Dimension: Bench Type 2200x900

idworks



Executive Desk | Min Dimension: BenchType 1800x800
Max Dimension: Bench Type 2200x900

idworks



Board Room Table | 08-10 Pax, 10-12 Pax

idworks



Board Room Table | 08-10 Pax, 10-12 Pax

idworks









ERGONOMIC CHAIR



LOUNGE CHAIR



Modular Furniture | Close office: 3300x3300

idworks



The work is done and everybody is gone.

No more voices, no more annoying rings, no more hectic actions and gestures.

The day is almost over, sounds and noises are now at peace.

Everything is tidy and the outside blends with the inside, and lights are turned into shadows.

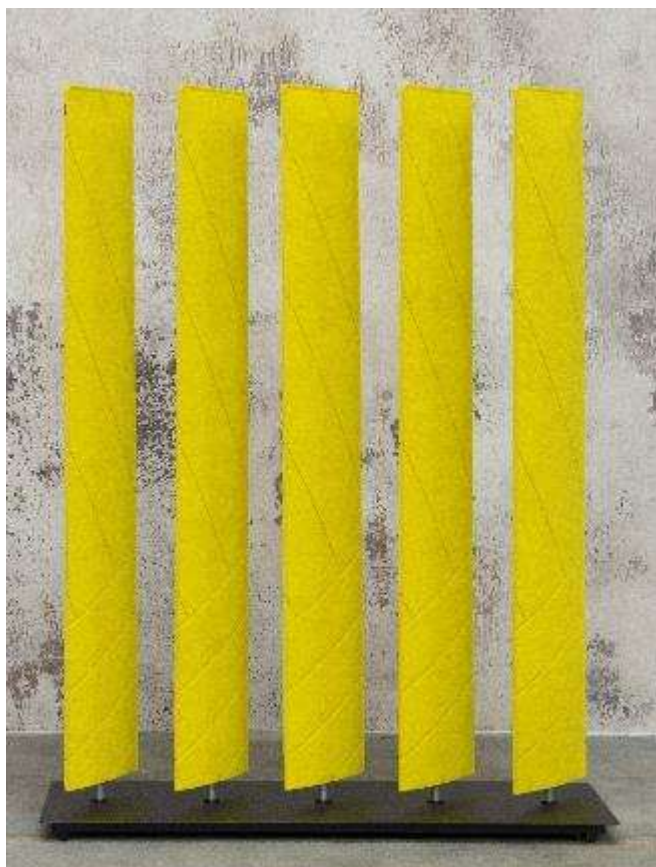


- Private feeling space
- Optimized dimensions allow flexible placement and repositioning.
- It can be easily placed along corridors and in non working spaces.
- Lighting and ventilation system are automatically activated by motion sensor.
- The interior is lined with sound damping material, which prevents echoes.





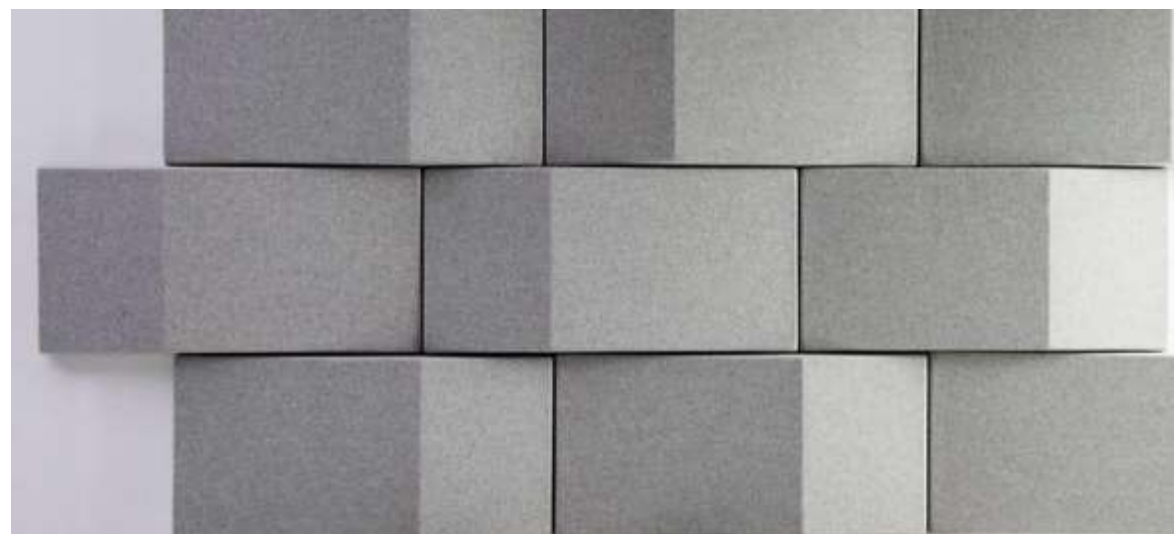
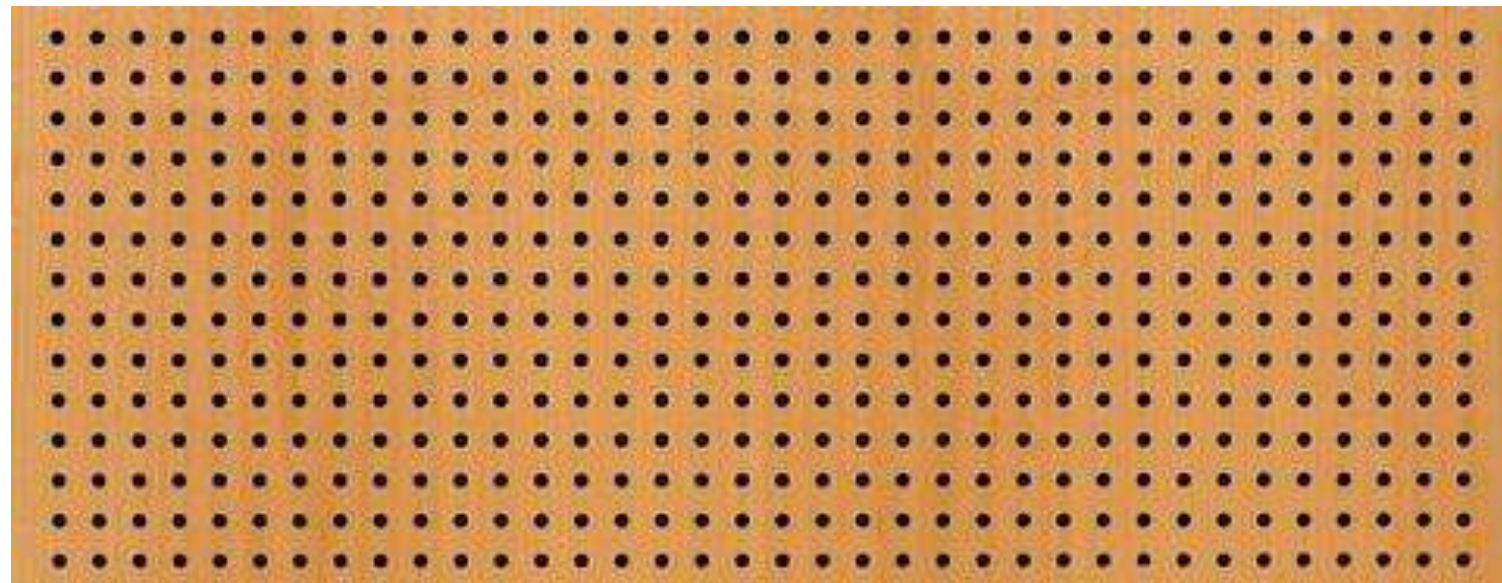
- An acoustic cocoon you can hang on the wall. When you're 'in the Hood' you can answer the phone in noisy surroundings without having to ask the caller to repeat himself. It can be installed anywhere and will cheer up any space!



- The free-standing room divider is made up of a series of five rotating acoustic blinds. With a simple twist, the blinds can be opened or closed to varying degrees to create privacy or open-up a space. This gives individuals the opportunity to determine the level of privacy they may want or need at any given moment to concentrate on a specific task.



- A flexible and modular freestanding system that can easily be rearranged to the needs of the office space. It's possible to have both public and private space, and even informal meeting rooms. Collaborate together or work independently, all within the easily movable urban workspace.



Acoustic Wood Panel are the best solution for noise control and sound proofing.

Acoustic Wood Panel comes with natural wood grain, and bright color style, with perfect decorative effect, which could be made with [natural wood textures](#) and pattern to form different visible effect.

Acoustic Ceiling Panel | Meeting / Open Plan

idworks



Acoustic Clouds allows you to unleash your creativity while reducing noise and reverberation. Adds dimension and acoustical control right where you need it the most.

It also reduces echo, improves speech intelligibility, exceptional acoustical performance, Clouds are a premium acoustic solution for keeping busy rooms quiet & echo free.



Acoustic Baffles

Sound Baffles are one of the most effective methods to reduce reverberation and noise, because both sides of the baffle are exposed to the room.

Why A Standing Desk?

"There's a direct relationship between time spent sitting and your risk of early mortality of any cause..."

-Annals of Internal Medicine® study



Benefits of Standing While Working

- Reduces Eye Strain
- Boosts Metabolism
- Stretches Hip Flexors
- Increases Concentration
- Optimizes Breathing
- Reduces Back Strain
- Increases Core Strength
- Promotes Spinal Disc Health





Mood Mobile glass board

Mobile glass writing board, available in any of our 24 Mood colours. Feet and legs in polished aluminium combined with sharp lines to give the Mood Mobile a minimalist look. Tempered, low iron glass guarantees a vibrant finish in every colour. Includes flip chart hooks in polished aluminium.

- Tempered, low iron glass
- 24 Mood colours
- Magnetic writing surface



Benefits of Standing While Working

- Reduces Eye Strain
- Boosts Metabolism
- Stretches Hip Flexors
- Increases Concentration
- Optimizes Breathing
- Reduces Back Strain
- Increases Core Strength
- Promotes Spinal Disc Health





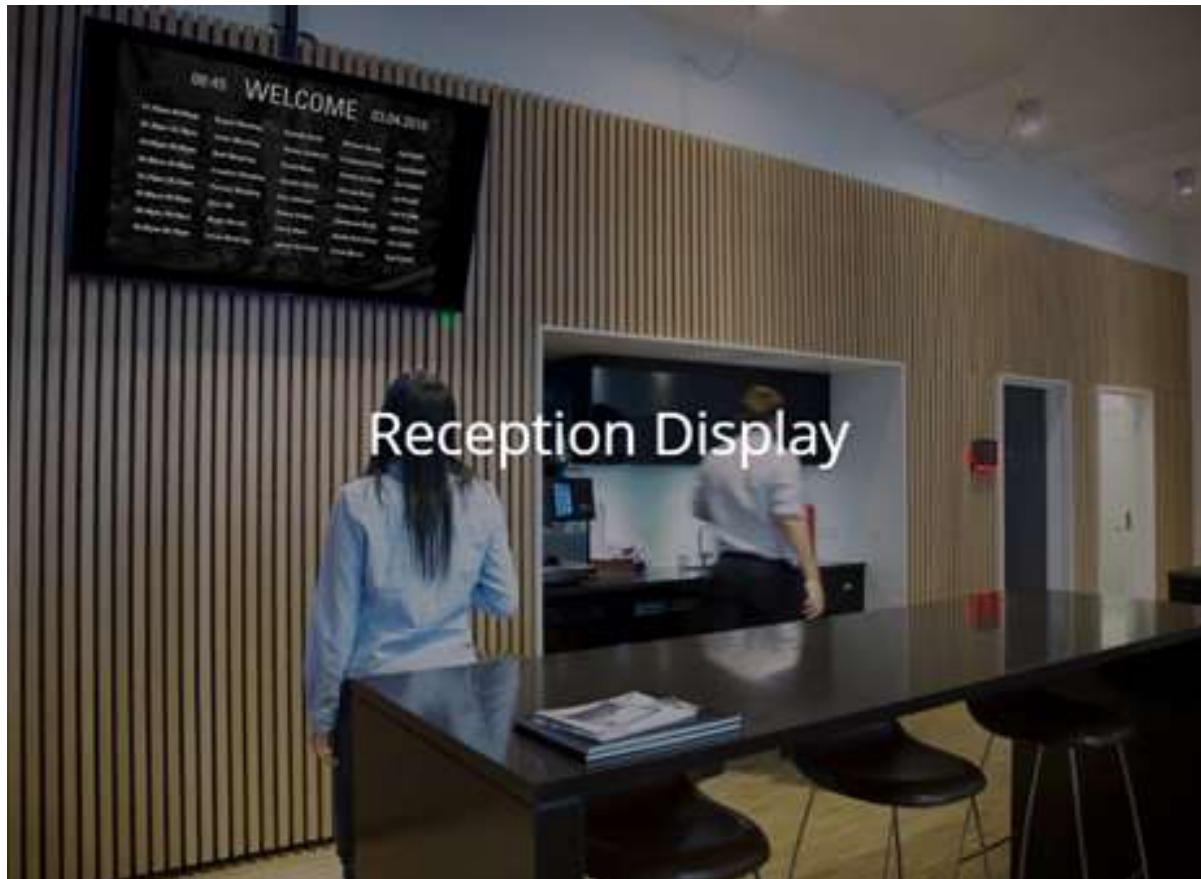
Mood Conference TV

A modern conference cabinet for TV screens up to 65" (1530 x 880 x 75 mm). The sliding doors in tempered glass provide a magnetic writing surface and are available in any of 24 our Mood colours. The TV screen is easy to mount with the included fittings.



Mood Fabric Wall

Glass writing board with softly rounded corners and a textile-covered frame. Available with full glass surface or combined with a textile-covered, sound absorbing surface or cork. Add separate modules to ready-made combinations to create unique multifunctional surfaces.



Meeting management

Booking a meeting or event in Microsoft Outlook does not have to involve complicated and manual processes. Our meeting room booking system makes it easy to book meetings, meeting rooms, visitors and make catering requests directly from Microsoft Outlook.



Meeting room panels

Our elegant meeting room panel provide an impressive and inviting office environment with easy meeting room booking and full overview of availability of the meeting rooms. The meeting room panel is powered over ethernet and has RFID card reader.



Reporting and analytics

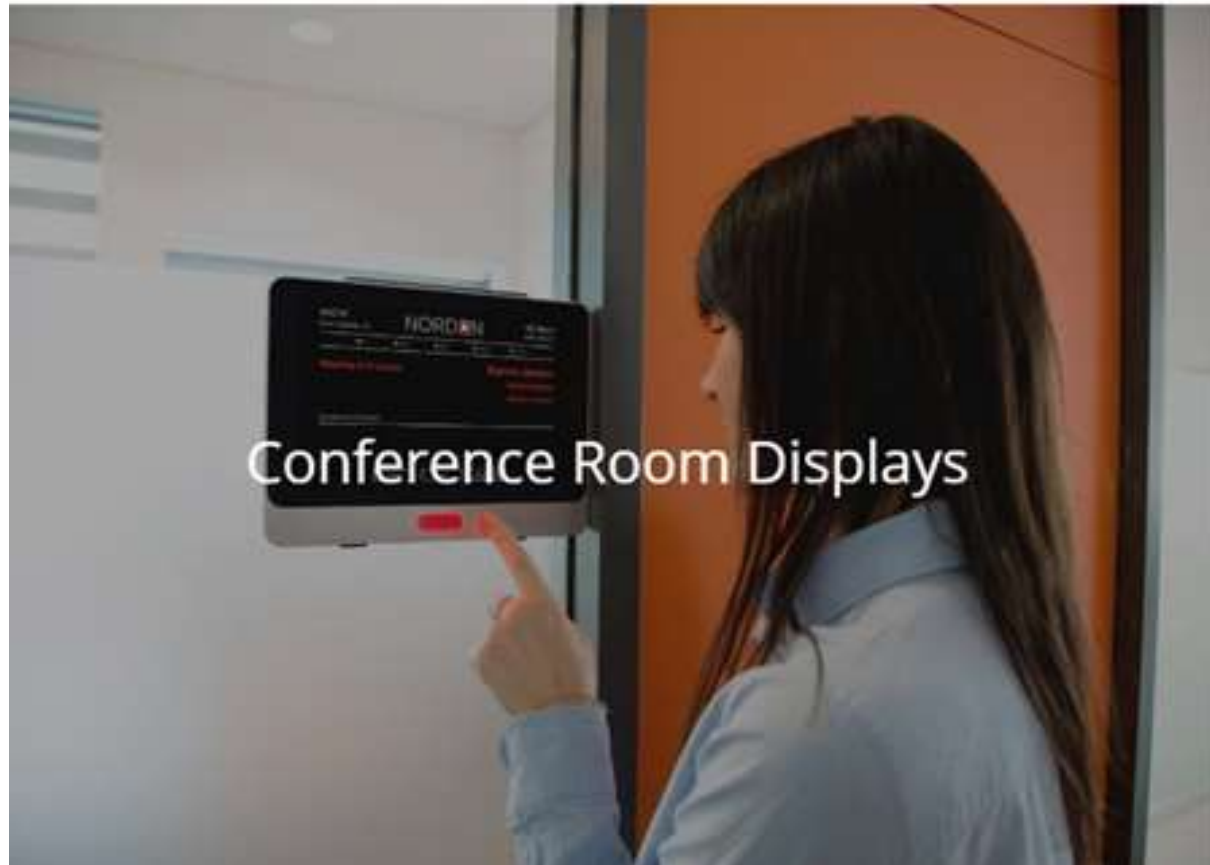
Our Microsoft Outlook meeting room booking system is capable of analyzing the use of your office space including everything concerning meetings, meeting room and resource usage and canteen supplies. The reporting tool provides better planning and enables you to make the right decisions.



Position tracking

Our sensor and interactive maps technology gives you a clear overview of where your meeting rooms or workspaces are located and how to get to them. The booking app can even book or accept your booking when you enter your meeting room.

Mobile Booking



Conference Room Displays

Reporting And Analytics



Desk Booking

RFID / NFC CARD READER

User authentication is made easy with the The Fischer & Kern Meeting Room Panel. In the administration tool it is possible to enable that users need to scan their RFID/NFC card or type in their personal pin code on the room panel before a booking can be made.

The RFID/NFC card reader in the Fischer & Kern Meeting Room Panel also allow users to check-in, extend and end their meetings with the RFID/NFC ID card.





EASY MEETING ROOM BOOKING FROM ROOM PANELS

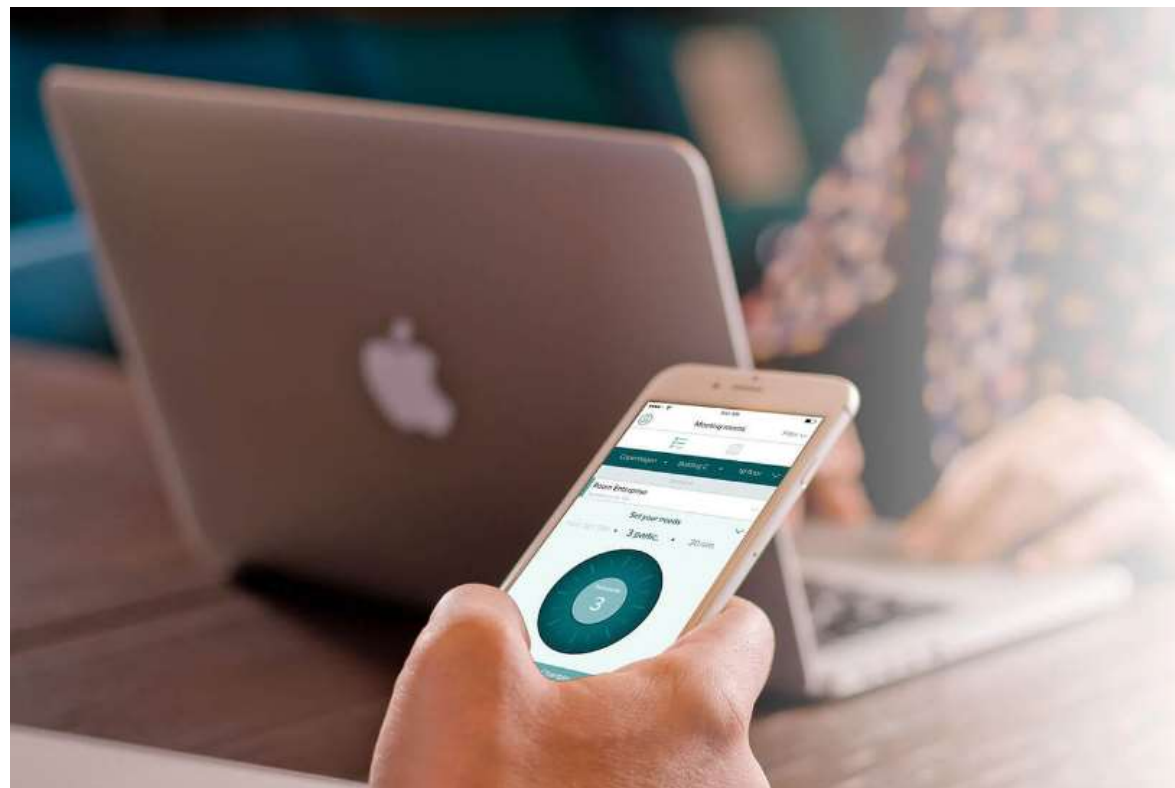
The meeting room panels displays today's bookings in the meeting rooms and the intuitive interface makes it easy for anyone to book the meeting rooms. The meeting room panels has an RFID card reader and built-in LED lights that give you a clear indication of which meeting rooms are available and which ones are occupied.



USER-FRIENDLY DESK BOOKING

- Through Microsoft Outlook

Desks can be easily booked through Microsoft Outlook with CONCIERGE BOOKING SOFTWARE. You can book a desk for a couple of hours, for a whole day or for several days. You can search for suitable desks at the desired office, floor or area. Your colleagues can also easily see which workplace you have booked.



NOTIFY HOST

You do not have to call the host every time a visitor has arrived. Once the visitor has arrived and has been registered, CONCIERGE BOOKING SOFTWARE can automatically send an email and/or a text message to the host with a custom message.

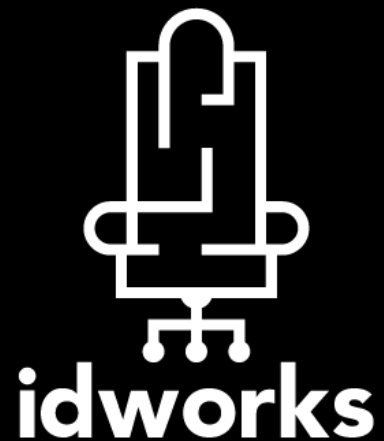


VISITOR CARD

The visitor card helps identify your visitors. The visitor card can be printed automatically when the visitor is signed in, or it can be printed to be ready for the visitor on arrival. The visitor cards can be designed for each customer and may include:

- The visitor's name
- Host
- Date
- Visitor card number
- Barcode / QR code for signing in and out
- Photo of the visitor
- Wifi code





Thank You...

idworks Global

idworks

United Tower, Bahrain Bay P.O. Box 60092,
Manama Kingdom of Bahrain
www.idworksglobal.com

Contact: Mohamad Hamade

Mobile: +973 39618728

Email: mohamad.hamade@idworksglobal.com

Kingdom of Saudi Arabia, Al Khobar

Contact: Dominique A. Rizk

Mobile: +966 5 4909 4047

Telephone +966 13 832 0323

Email: Dominique.rizk@idworksglobal.com

Kingdom of Saudi Arabia, Riyadh

Contact: Mohammed Asha

Mobile: +966 569093408

Email: mohammed.asha@idworksglobal.com

Sultanate of Oman

- *Muscat*

United Arab Emirates

- *Dubai*
- *Abu Dhabi*

Qatar

- *Doha*

Philippines

- *Manila*

Australia

- *Sydney*